

Pareto Plots and Pie Charts

Use to display the distribution of categorical variables. Pareto plots sort in descending order of frequency of occurrence or by a weighted value.

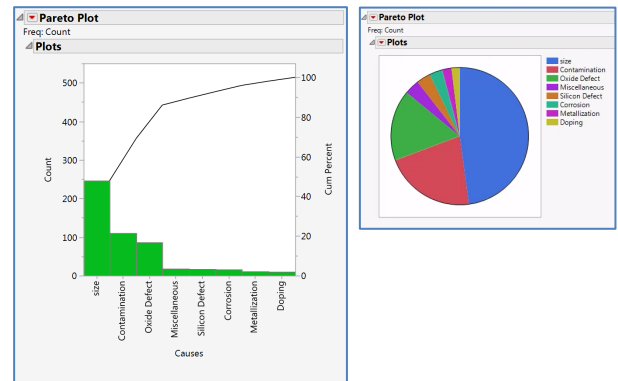
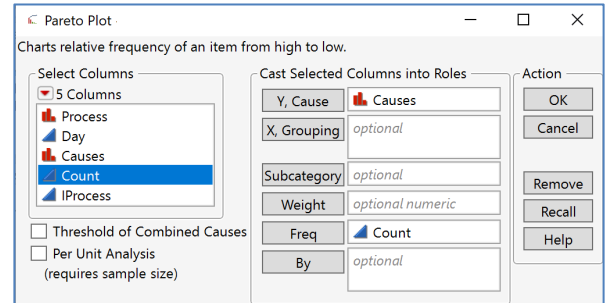
Pareto Plots

1. From an open JMP® data table, select **Analyze > Quality and Process > Pareto Plot**.
2. Click on a nominal variable from **Select Columns**, and click **Y, Cause** (nominal variables have red bars, ordinal variables have green bars).
3. If you have summarized data, enter the Count column into **Freq**.
4. Click **OK** to generate the Pareto plot.

Tips:

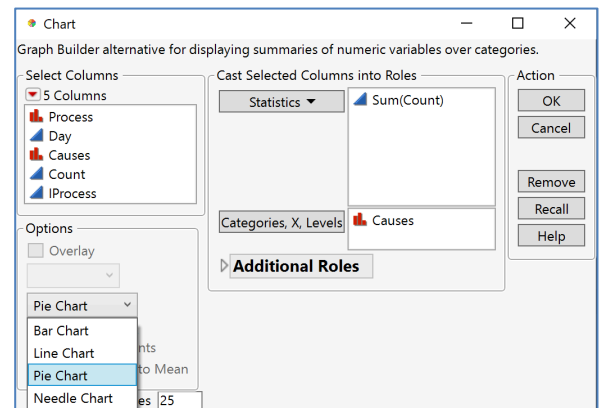
- To change the display or select additional options, click on the **red triangle**.
- To change the display from a Pareto plot to a pie chart, click on the **red triangle** and select **Pareto > Pie Chart**.
- To label a bar or slice of the pie, right-click on the category and select **Selected Causes > Label**.

Failuressize.jmp (Help > Sample Data Folder > Quality Control)



Pie Charts – Another Way

1. Select **Graph > Legacy > Chart**.
2. Click on a nominal variable from **Select Columns**, and click **Categories, X, Levels**.
3. Select the variable Count, choose the **Statistics** drop-down menu and select **Sum**.
4. Choose **Pie Chart** and Click **OK**.
5. To change the resulting display from a pie chart to a bar chart, click on the **red triangle** and select **Vertical Chart** or **Horizontal Chart**.



Notes: Bar charts can also be produced from **Analyze > Distribution** or **Graph > Graph Builder**.

For more details on creating pie charts and Pareto plots, see **Discovering JMP > Visualize Your Data** and **Essential Graphing in JMP Help**.